

RaguTeam at SemEval-2026 Task 8: Meno and Friends in a Judge-Orchestrated LLM Ensemble for Faithful Multi-Turn Response Generation

Ivan Bondarenko Roman Derunets Oleg Sedukhin
Mikhail Komarov Ivan Chernov Mikhail Kulakov
Novosibirsk State University
i.yu.bondarenko@gmail.com

Abstract

We present our winning system for Task B (generation with reference passages) in SemEval-2026 Task 8: MTRAGEval. Our method is a heterogeneous ensemble of seven LLMs with two prompting variants, where a GPT-4o-mini judge selects the best candidate per instance. We ranked 1st out of 26 teams, achieving a conditioned harmonic mean of 0.7827 and outperforming the strongest baseline (gpt-oss-120b, 0.6390). Ablations show that diversity in model families, scales, and prompting strategies is essential, with the ensemble consistently beating any single model. We also introduce Meno-Lite-0.1, a 7B domain-adapted model with a strong cost-performance trade-off, and analyse MTRAGEval, highlighting annotation limitations and directions for improvement. Our code is publicly available.¹

1 Introduction

Retrieval-Augmented Generation (RAG) has become a standard way to ground LLMs in external evidence, but multi-turn settings remain substantially harder because systems must combine dialogue context, retrieved passages, abstention behaviour, and faithfulness. SemEval-2026 Task 8 MTRAGEval (Rosenthal et al., 2026a,b) addresses this gap. In Task B, systems must answer the final user query in a multi-turn dialogue using provided reference passages.

We submit a judge-selected heterogeneous ensemble that ranks **1st** out of 26 teams. We generate candidates from seven diverse LLMs under two prompting variants and use a lightweight GPT-4o-mini judge for per-instance selection. Our contributions are:

- **Judge-selected ensemble:** seven LLMs with two prompting strategies, selected by GPT-4o-mini (0.7827 vs. 0.6390 best baseline).

- **Diversity ablations:** gains over any single model across families, scales, and prompting strategies.
- **Meno-Lite-0.1:** a 7B domain-adapted model that reaches 0.681 HM₃ on answerable instances, demonstrating a strong cost-performance trade-off and providing occasional high-quality selections.
- **Benchmark analysis:** annotation and metric limitations with directions for improvement.

2 Background

Retrieval-Augmented Generation. Retrieval-augmented generation (RAG) grounds language models in external evidence by combining parametric knowledge with retrieved non-parametric memory (Lewis et al., 2020). While early RAG systems focused mainly on single-turn, text-based question answering, recent work has extended retrieval-augmented reasoning to more heterogeneous settings. One line of work studies multimodal RAG, where systems retrieve and integrate evidence across text, images, tables, and other modalities, requiring cross-modal alignment and grounded generation (Guo et al., 2025a; Abootorabi et al., 2025; Derunets et al., 2025). Another line considers structured and semi-structured sources, especially tables, where retrieval must operate over schema-aware representations rather than plain passages (Chen et al., 2020; Antropova et al., 2025; Pattnayak et al., 2025). Together, these directions show that RAG is increasingly moving from simple passage retrieval toward heterogeneous evidence grounding.

Multi-Turn RAG. Multi-turn RAG introduces an additional challenge: the system must interpret the current user query in the context of a dialogue history while remaining faithful to the retrieved evidence. This requires resolving coreferences, tracking user intent across turns, handling underspecified or unanswerable requests, and avoiding unsupported continuation from prior dialogue con-

¹github.com/RaguTeam/ragu_mtrag_semeval

text. The mtRAG benchmark introduced a human-generated multi-turn RAG corpus with 110 conversations and 842 tasks (samples) across four domains, showing that even strong RAG systems struggle with late-turn coherence and faithful answer generation (Katsis et al., 2025). MTRAG-UN further emphasises difficult cases such as unanswerable, underspecified, non-standalone, and unclear conversational turns (Rosenthal et al., 2026a). SemEval-2026 Task 8 MTRAGEval (Rosenthal et al., 2026b) builds on this setting with standardised evaluation tracks; in Task B, systems receive the dialogue history and reference passages and must generate a final-turn response grounded strictly in the provided documents.

Model Ensembles and LLM-Based Selection. LLM ensembles can exploit complementary strengths across model families, scales, and prompting strategies (Jiang et al., 2023; Wang et al., 2024; Lu et al., 2024). At the same time, LLM-based evaluation provides a scalable mechanism for comparing candidate responses when reference-based metrics do not fully capture faithfulness or answer appropriateness (Zheng et al., 2023; Liu et al., 2023). Our approach combines these two ideas: we generate diverse candidate responses with a heterogeneous ensemble and use a lightweight LLM judge to select the most faithful answer for each instance.

3 System Description

Our system follows a three-stage pipeline illustrated in Figure 1: (a) prompt construction with two distinct strategies, (b) parallel candidate generation from seven heterogeneous LLMs, and (c) judge-based selection of the final response.

3.1 Prompt Engineering

System Prompt Design. We refined the system prompt iteratively using a Gemini-based procedure (detailed in Appendix B): (1) sample 30 training instances; (2) Gemini analyses expected behaviour and synthesises a unified system prompt P ; (3) evaluate P on the same instances; (4) Gemini self-critiques its responses and proposes edits; (5) aggregate into P_2 . Prompt P gave small but consistent gains over a basic prompt, whereas P_2 degraded performance by encouraging answering despite insufficient evidence. We use P for Group 1 models. The final prompt emphasises explicit abstention for unanswerable questions, strict grounding in provided passages, concise formatting, and

Model	Size	Type	Grp
Gemini-3-Pro-Preview	–	Prop.	1
GLM-4.6	357B	Open	1
Llama-3.3-70B-Instruct	70B	Open	1
Qwen3-235B-A22B-Instruct-2507	235B	Open	1
Claude 4.5 Haiku	–	Prop.	2
Qwen2.5-32B-Instruct	32B	Open	2
Meno-Lite-0.1	7B	Open	2

Table 1: Ensemble composition. Group 1: system prompt only; Group 2: few-shot. “Prop.” = proprietary (API); “Open” = open-weight.

dialogue history use for coreference resolution (see Appendix C for the full text).

Few-Shot Strategy. For Group 2 models, we augment the prompt with category-aware few-shot examples. Training instances cluster into three structural categories: (1) *full context*: non-empty history and passages; (2) *empty context*: non-empty history but empty passages (must detect unanswerability); (3) *empty history*: non-empty passages but empty history (first-turn question). We select the exemplar from each category via medoids – one from each of the first two categories and two from the third, yielding four exemplars total. Within each category, we embed all instances with gte-multilingual-base (Zhang et al., 2024) and choose the instance minimising total distance to others. The four exemplars improve robustness across patterns, especially for unanswerable cases (see Appendix D for the complete examples).

3.2 Ensemble Composition

Table 1 lists the seven ensemble models. **Group 1** (system prompt only): Gemini-3-Pro-Preview (Team et al., 2023), GLM-4.6 (Zeng et al., 2025), Llama-3.3-70B-Instruct (Grattafiori et al., 2024), and Qwen3-235B-A22B-Instruct-2507 (Yang et al., 2025). **Group 2** (few-shot): Claude 4.5 Haiku (Anthropic), Qwen2.5-32B-Instruct (Yang et al., 2024), and Meno-Lite-0.1². The latter is a 7B model adapted from Qwen2.5-7B-Instruct via continued pretraining on Russian–English educational data and supervised fine-tuning for extraction, multi-hop QA and RAG-oriented instruction following; further details are provided in Appendix A. Overall, we intentionally mix providers, training pipelines and model scales to maximise diversity in failure modes.

²huggingface.co/bond005/meno-lite-0.1

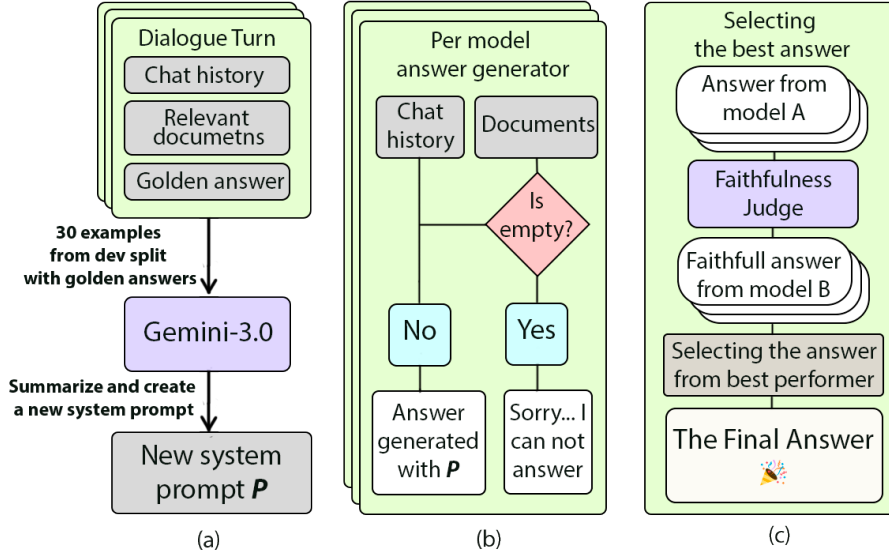


Figure 1: Overview of the proposed framework. **Stage (a)**: Two prompting strategies – an iteratively refined system prompt and a category-aware few-shot variant. **Stage (b)**: Seven LLMs from two groups generate candidate responses. **Stage (c)**: GPT-4o-mini evaluates all candidates and selects the best response.

3.3 Judge-Based Selection

For the judge, we use GPT-4o-mini, a well-known model that also served as one of the judges in the original MTRAG paper. Given seven candidate responses for each instance, GPT-4o-mini evaluates each response for **faithfulness** – that is, whether all claims are supported by the provided passages – and assigns a score from 0 to 1. We then select the top-ranked candidate. Ties are broken using validation-set scores.

Post-processing. For all instances where the reference context is empty, we replace the ensemble output with the fixed response “I don’t have an answer,” ensuring reliable abstention.

4 Experimental Setup

Dataset. MTRAGEval Task B evaluation set comprises 507 instances from four collections: FiQA (77), IBMCloud (131), CLAPnq (142), and Govt (157). Answerability labels: answerable 285 (56.2%), unanswerable 97 (19.1%), underspecified 78 (15.4%), partially answerable 47 (9.3%). The training set contains 842 samples from 110 conversations, with 7.7 turns on average.

Metrics. Three metrics: **RB_alg** (harmonic mean of BERTScore Recall (Zhang et al., 2019), BERTK-Precision, and ROUGE-L), **RB_llm** (LLM-judge score adapted from RAD-Bench (Kuo et al., 2025)), and **RL_F** (reference-less faithfulness from

System	HM ₃ (cond.)
Our ensemble (1st place)	0.7827
Baseline: gpt-oss-120b	0.6390

Table 2: Main results on MTRAGEval Task B. Our system outperforms the best organiser baseline by +0.1437 absolute (+22.5% relative).

RAGAS (Es et al., 2024)). An IDK judge flags abstentions, producing conditioned variants for unanswerable questions. The official score is the harmonic mean of the three conditioned metrics (HM₃).

Validation. We use dialogue author_id-disjoint splits: 6 authors for training (288 instances), 2 for validation (180), and 5 for testing (374). Rapid iteration uses a stratified 96-instance subset. GPT-4o-mini as a single judge yields strong agreement with organisers’ multi-judge scores (Spearman $\rho=0.89$ unconditioned; $\rho=0.95$ conditioned (Spearman, 1904)).

Implementation. Open-weight models run with vLLM (Kwon et al., 2023) on NVIDIA A100 GPUs with greedy decoding. Proprietary models are queried via APIs with default settings.

Model	Grp	RB _{aidk}	RB _{ldk}	RL _{Fidk}	HM ₃
GLM-4.6	1	0.63	0.77	0.89	0.75
Gemini-3-Pro-Preview	1	0.63	0.75	0.90	0.74
Llama-3.3-70B-Instruct	1	0.63	0.75	0.86	0.73
Qwen3-235B-A22B	1	0.53	0.85	0.87	0.72
Claude 4.5 Haiku	2	0.58	0.76	0.84	0.71
Qwen2.5-32B-Instruct	2	0.48	0.67	0.72	0.61
Meno-Lite-0.1	2	0.50	0.59	0.70	0.59
Ensemble (our judge)	–	0.71	0.82	0.98	0.82
Ensemble (MTRAGEval)	–	0.64	0.84	0.93	0.78

Table 3: Individual model performance (conditioned metrics on the full evaluation set). Grp: prompting group. "Ensemble (our judge)" reports the scores obtained during our internal testing using GPT-4o-mini as the faithfulness judge. "Ensemble (MTRAGEval)" reports the final official scores assigned by the competition organisers.

5 Results and Analysis

5.1 Main Results

Table 2 presents our main results on the MTRAGEval Task B final test set. Our ensemble achieves a conditioned HM₃ of **0.7827**, placing **1st among 26 teams** and outperforming the strongest baseline (gpt-oss-120b, 0.6390) by +14.4 absolute points.

5.2 Individual Model Performance

Table 3 reports standalone performance. The strongest individual model, GLM-4.6, achieves HM₃=0.748, while the ensemble reaches 0.783 (organisers’ judges) and 0.819 (our single judge), confirming that judge-based selection adds value beyond any single model. The two best models achieve their strength through different mechanisms: GLM-4.6 excels on RB_{llm}, while Gemini-3-Pro-Preview leads on RL_F – precisely the complementarity that judge-based selection exploits.

5.3 Ablation Study

Table 4 summarises our ablation experiments across four dimensions. All values are unconditioned HM₃ scores; for Answerable instances, conditioned and unconditioned metrics coincide. Detailed per-metric breakdowns are in Appendix G.

(i) Ensemble vs. individual models. On Answerable instances, the ensemble with judge selection (0.785) slightly outperforms the best standalone configuration (GLM-4.6 + few-shot, 0.782; +0.3 p.p.). On Underspecified instances, however, the best individual model (GLM-4.6 + few-shot, 0.381) exceeds the ensemble (0.367). We attribute this to the judge occasionally selecting confident-

Ablation	Configuration	ANS	UND
<i>(i) Ensemble vs. individual models</i>			
	Full ensemble (judge)	.79	.37
	Best single: GLM + FS	.78	.38
	Best single: GLM + SP	.78	.34
<i>(ii) Judge vs. random selection</i>			
	Full ensemble (judge)	.79	.37
	Full ensemble (random)	.76	.35
<i>(iii) Contribution of Meno-Lite-0.1</i>			
	With Meno-Lite-0.1	.79	.37
	Without Meno-Lite-0.1	.79	.36
<i>(iv) Few-shot (FS) vs. system prompt (SP)</i>			
	GLM-4.6 + FS	.78	.38
	GLM-4.6 + SP	.78	.34
	Llama-70B + FS	.78	.38
	Llama-70B + SP	.76	.35

Table 4: Ablation results (unconditioned HM₃). ANS = Answerable ($n=285$), UND = Underspecified ($n=78$). FS = few-shot prompting with basic system prompt; SP = iteratively refined system prompt without few-shot.

sounding but non-clarifying responses, whereas GLM-4.6 with few-shot more consistently produces clarification requests. Across all categories combined, the ensemble outperforms every individual model due to its strength on Answerable and Unanswerable instances (where the deterministic IDK fallback achieves perfect scores).

Furthermore, the results on answerable instances alone directly refute the claim that the ensemble’s performance is largely driven by exploiting the empty-context shortcut. Even when restricted to only answerable examples, the ensemble still outperforms the best individual model (HM₃ = 0.785 vs. 0.782), confirming that its advantage is not solely attributable to the IDK fallback.

(ii) Judge vs. random selection. Judge selection consistently outperforms random selection: +2.5 p.p. on Answerable (0.785 vs. 0.760) and +1.9 p.p. on Underspecified (0.367 vs. 0.348). The faithfulness metric shows the largest gain (RL_F: 0.998 vs. 0.922 on Answerable), confirming that the judge successfully identifies better-grounded candidates. Notably, even random selection outperforms most individual models, indicating that **diversity alone is valuable**.

(iii) Contribution of Meno-Lite-0.1. The 7B Meno-Lite-0.1 model’s direct contribution to the final ensemble is limited: removing it changes Answerable and Underspecified performance by only 0.2 and 0.4 percentage points, respectively, and the judge selects it in only 2 of 424 in-

stances. Nevertheless, these selected responses achieve strong HM_3 (≈ 0.707), suggesting niche complementarity at minimal computational cost. Moreover, despite having fewer parameters than Qwen2.5-32B-Instruct, Meno-Lite-0.1 performs substantially better on Unanswerable instances in the standalone regime, achieving an IDK rate of 0.54 (see Appendix F). Its main value is therefore cost-effective standalone performance and a useful domain-adaptation case study for this task.

(iv) Few-shot vs. iterative prompt refinement.

Few-shot prompting with category-aware examples consistently outperforms the iteratively refined system prompt. Gains are modest on Answerable (GLM: +0.4 p.p.; Llama: +2.3 p.p.) but substantial on Underspecified (GLM: +3.7 p.p.; Llama: +2.1 p.p.), demonstrating that concrete behavioural demonstrations outperform abstract instructions, particularly for edge cases requiring clarification or abstention.

Summary. Ensemble diversity and informed selection are complementary: diversity ensures varied candidates, while the judge exploits this to select the strongest response per instance. Few-shot prompting is the most effective single intervention, especially for challenging categories.

6 Critical Analysis of the Benchmark

Through manual examination we identify several limitations (detailed in Appendix K). The most consequential is **target leakage through empty context**: all 97 unanswerable questions have *empty* reference passages, creating a trivial shortcut where detecting empty context and returning “I don’t know” yields perfect conditioned scores. In realistic deployments, unanswerable questions are accompanied by *irrelevant* retrieved passages, making answerability detection substantially harder. We additionally observe annotation coverage gaps, possible metric leakage through reference-less scores computable on the submission set, and the absence of shared guidelines between generators and evaluators. We recommend including distractor passages for unanswerable instances in future iterations.

7 Discussion and Conclusion

Key Insights. A heterogeneous LLM ensemble with judge-based selection achieved 1st place in MTRAGEval Task B ($HM_3=0.783$ vs. 0.639 for

the strongest baseline). Three findings generalise beyond this specific benchmark.

First, diversity matters more than scale: the ensemble outperforms the best single model (GLM-4.6, 357B; $HM_3 = 0.783$ vs. 0.748) despite including models 5–50 \times smaller, confirming that complementary failure modes outweigh raw parameter count for grounded generation.

Second, concrete behavioural demonstrations outperform abstract instructions: category-aware few-shot exemplars improve underspecified-question handling by +3.7 p.p. over an iteratively refined system prompt, suggesting that models learn edge-case behaviour more effectively from examples than from prescriptive directives.

Third, faithfulness is necessary but not sufficient for pragmatic appropriateness: the ensemble underperforms GLM-4.6 on underspecified questions (0.367 vs. 0.381), motivating multi-objective selection that balances grounding with completeness. Beyond the ensemble, Meno-Lite-0.1 demonstrates that a domain-adapted 7B model can match 70B-scale performance on Russian benchmarks (MERA: 0.555, tied with Llama-3.3-70B), offering a strong cost–performance trade-off for resource-constrained settings.

System Limitations. The following limitations apply to our system.

(i) Running seven generators plus a judge is computationally expensive and relies partly on proprietary APIs.

(ii) Sequential generation and judging introduce latency unsuitable for real-time use.

(iii) GPT-4o-mini occasionally favours longer responses.

(iv) Judge-based selection introduces a dependency on the judge model; GPT-4o-mini achieves strong correlation with the organisers’ scores (Spearman $\rho=0.95$ conditioned), but this may not hold for models with different failure modes, motivating evaluation of open-weight judges and multi-judge panels.

(v) A fully open-weight pipeline appears feasible but remains underexplored.

Benchmark Limitations. The empty-context shortcut in MTRAGEval (all 97 unanswerable questions have empty reference passages) incentivises a trivial answerability detector over genuine comprehension checking, and the reference-less faithfulness metric can be computed on the submission set, enabling partial metric leakage. Future benchmarks

should include distractor passages for unanswerable questions and restrict reference-less metric computation to the evaluation phase.

Future work. We plan to explore adaptive routing to invoke model subsets per instance, including category-aware routing where a lightweight classifier first predicts the answerability category and then routes to specialised model subsets (e.g., Qwen3-235B for underspecified queries, Haiku for partially answerable ones), multi-objective judge selection combining faithfulness with completeness, self-consistency (Wang et al., 2022) as a single-model alternative, scaling domain adaptation to 14B–32B, and improved abstention calibration for underspecified queries.

8 Acknowledgments

We thank the MTRAGEval organizers for their timely communication and the anonymous reviewers for their constructive feedback. Computational resources were provided by Novosibirsk State University.

References

- Mohammad Mahdi Abootorabi, Amirhosein Zobeiri, Mahdi Dehghani, Mohammadali Mohammadkhani, Bardia Mohammadi, Omid Ghahroodi, Mahdiah Soleymani Baghshah, and Ehsaneddin Asgari. 2025. [Ask in any modality: A comprehensive survey on multimodal retrieval-augmented generation](#). In *Findings of the Association for Computational Linguistics: ACL 2025*, pages 16776–16809, Vienna, Austria. Association for Computational Linguistics.
- Ekaterina Antropova, Egor Kratkov, Roman Derunets, Margarita Trofimova, Ivan Bondarenko, Alexander Panchenko, Vasily Konovalov, and Maksim Savkin. 2025. [TabQA at SemEval-2025 task 8: Column augmented generation for question answering over tabular data](#). In *Proceedings of the 19th International Workshop on Semantic Evaluation (SemEval-2025)*, pages 937–952, Vienna, Austria. Association for Computational Linguistics.
- Tom Brown, Benjamin Mann, Nick Ryder, Melanie Subbiah, Jared D Kaplan, Prafulla Dhariwal, Arvind Neelakantan, Pranav Shyam, Girish Sastry, Amanda Askell, and 1 others. 2020. Language models are few-shot learners. *Advances in neural information processing systems*, 33:1877–1901.
- Wenhu Chen, Ming-Wei Chang, Eva Schlinger, William Wang, and William W Cohen. 2020. Open question answering over tables and text. *arXiv preprint arXiv:2010.10439*.
- Igor Churin, Murat Apishev, Maria Tikhonova, Denis Shevelev, Aydar Bulatov, Yuri Kuratov, Sergei Averkiev, and Alena Fenogenova. 2025. [Long context benchmark for the Russian language](#). In *Proceedings of the 6th Workshop on Computational Approaches to Discourse, Context and Document-Level Inferences (CODI 2025)*, pages 1–13, Suzhou, China. Association for Computational Linguistics.
- R Derunets, I Bondarenko, M Kulakov, V Prokopenko, and F Tikhunov. 2025. Knowledge as recollection: advancing multimodal retrieval-augmented generation. *Investigations on applied mathematics and informatics. Part V, Zap. Nauchn. Sem. POMI*, 546:174–192.
- Shahul Es, Jithin James, Luis Espinosa Anke, and Steven Schockaert. 2024. Ragas: Automated evaluation of retrieval augmented generation. In *Proceedings of the 18th conference of the european chapter of the association for computational linguistics: system demonstrations*, pages 150–158.
- Alena Fenogenova, Artem Chervyakov, Nikita Martynov, Anastasia Kozlova, Maria Tikhonova, Albina Akhmetgareeva, Anton Emelyanov, Denis Shevelev, Pavel Lebedev, Leonid Sinev, and 1 others. 2024. Mera: A comprehensive llm evaluation in russian. In *Proceedings of the 62nd Annual Meeting of the Association for Computational Linguistics (Volume 1: Long Papers)*, pages 9920–9948.
- Aaron Grattafiori, Abhimanyu Dubey, Abhinav Jauhri, Abhinav Pandey, Abhishek Kadian, Ahmad Al-Dahle, Aiesha Letman, Akhil Mathur, Alan Schelten, Alex Vaughan, Amy Yang, Angela Fan, Anirudh Goyal, Anthony Hartshorn, Aobo Yang, Archi Mitra, Archie Sravankumar, Artem Korenev, Arthur Hinsvark, and 542 others. 2024. [The llama 3 herd of models](#). *Preprint*, arXiv:2407.21783.
- Zirui Guo, Xubin Ren, Lingrui Xu, Jiahao Zhang, and Chao Huang. 2025a. [Rag-anything: All-in-one rag framework](#). *Preprint*, arXiv:2510.12323.
- Zirui Guo, Lianghao Xia, Yanhua Yu, Tu Ao, and Chao Huang. 2025b. [LightRAG: Simple and fast retrieval-augmented generation](#). In *Findings of the Association for Computational Linguistics: EMNLP 2025*, pages 10746–10761, Suzhou, China. Association for Computational Linguistics.
- Vitaly Ivanin, Ekaterina Artemova, Tatiana Batura, Vladimir Ivanov, Veronika Sarkisyan, Elena Tutubalina, and Ivan Smurov. 2020. [Rurebus: A case study of joint named entity recognition and relation extraction from e-government domain](#). In *Analysis of Images, Social Networks and Texts: 9th International Conference, AIST 2020, Skolkovo, Moscow, Russia, October 15–16, 2020, Revised Selected Papers*, page 19–27, Berlin, Heidelberg. Springer-Verlag.
- Dongfu Jiang, Xiang Ren, and Bill Yuchen Lin. 2023. Llm-blender: Ensembling large language models

- with pairwise ranking and generative fusion. In *Proceedings of the 61st Annual Meeting of the Association for Computational Linguistics (Volume 1: Long Papers)*, pages 14165–14178.
- Yannis Katsis, Sara Rosenthal, Kshitij Fadnis, Chulaka Gunasekara, Young-Suk Lee, Lucian Popa, Vraj Shah, Huaiyu Zhu, Danish Contractor, and Marina Danilevsky. 2025. [Mtrag: A multi-turn conversational benchmark for evaluating retrieval-augmented generation systems](#). *Preprint*, arXiv:2501.03468.
- Tzu-Lin Kuo, FengTing Liao, Mu-Wei Hsieh, Fu-Chieh Chang, Po-Chun Hsu, and Da-Shan Shiu. 2025. Radbench: Evaluating large language models’ capabilities in retrieval augmented dialogues. In *Proceedings of the 2025 Conference of the Nations of the Americas Chapter of the Association for Computational Linguistics: Human Language Technologies (Volume 3: Industry Track)*, pages 868–902.
- Woosuk Kwon, Zhuohan Li, Siyuan Zhuang, Ying Sheng, Lianmin Zheng, Cody Hao Yu, Joseph Gonzalez, Hao Zhang, and Ion Stoica. 2023. Efficient memory management for large language model serving with pagedattention. In *Proceedings of the 29th symposium on operating systems principles*, pages 611–626.
- Patrick Lewis, Ethan Perez, Aleksandra Piktus, Fabio Petroni, Vladimir Karpukhin, Naman Goyal, Heinrich Küttler, Mike Lewis, Wen-tau Yih, Tim Rocktäschel, and 1 others. 2020. Retrieval-augmented generation for knowledge-intensive nlp tasks. *Advances in neural information processing systems*, 33:9459–9474.
- Yang Liu, Dan Iter, Yichong Xu, Shuohang Wang, Ruo Chen Xu, and Chenguang Zhu. 2023. G-eval: Nlg evaluation using gpt-4 with better human alignment. In *Proceedings of the 2023 conference on empirical methods in natural language processing*, pages 2511–2522.
- Natalia Loukachevitch, Ekaterina Artemova, Tatiana Batura, Pavel Braslavski, Iliia Denisov, Vladimir Ivanov, Suresh Manandhar, Alexander Pugachev, and Elena Tutubalina. 2021. [NEREL: A Russian dataset with nested named entities, relations and events](#). In *Proceedings of the International Conference on Recent Advances in Natural Language Processing (RANLP 2021)*, pages 876–885, Held Online. INCOMA Ltd.
- Jinliang Lu, Ziliang Pang, Min Xiao, Yaochen Zhu, Rui Xia, and Jiajun Zhang. 2024. Merge, ensemble, and cooperate! a survey on collaborative strategies in the era of large language models. *arXiv preprint arXiv:2407.06089*.
- Priyaranjan Pattnayak, Amit Agarwal, Hansa Meghwani, Hitesh Laxmichand Patel, and Srikant Panda. 2025. Hybrid ai for responsive multi-turn online conversations with novel dynamic routing and feedback adaptation. In *Proceedings of the 4th International Workshop on Knowledge-Augmented Methods for Natural Language Processing*, pages 215–229.
- Guilherme Penedo, Hynek Kydlíček, Anton Lozhkov, Margaret Mitchell, Colin A Raffel, Leandro Von Werra, Thomas Wolf, and 1 others. 2024. The fineweb datasets: Decanting the web for the finest text data at scale. *Advances in Neural Information Processing Systems*, 37:30811–30849.
- Sara Rosenthal, Yannis Katsis, Vraj Shah, Lihong He, Lucian Popa, and Marina Danilevsky. 2026a. [Mtrag-un: A benchmark for open challenges in multi-turn rag conversations](#). *Preprint*, arXiv:2602.23184.
- Sara Rosenthal, Vraj Shah, Yannis Katsis, and Marina Danilevsky. 2026b. Semeval-2026 task 8: Mtrageval: Evaluating multi-turn rag conversations. In *Proceedings of the 20th International Workshop on Semantic Evaluation (SemEval-2026)*, San Diego, California. Association for Computational Linguistics.
- Charles Spearman. 1904. The proof and measurement of association between two things. *The American Journal of Psychology*, 15(1):72–101.
- Zhongkai Sun, Yingxue Zhou, Jie Hao, Xing Fan, Yanbin Lu, Chengyuan Ma, Wei Shen, and Chenlei Guo. 2023. [Improving contextual query rewrite for conversational AI agents through user-preference feedback learning](#). In *Proceedings of the 2023 Conference on Empirical Methods in Natural Language Processing: Industry Track*, pages 432–439, Singapore. Association for Computational Linguistics.
- Yixuan Tang and Yi Yang. 2024. Multihop-rag: Benchmarking retrieval-augmented generation for multihop queries. *arXiv preprint arXiv:2401.15391*.
- Gemini Team, Rohan Anil, Sebastian Borgeaud, Jean-Baptiste Alayrac, Jiahui Yu, Radu Soricut, Johan Schalkwyk, Andrew M Dai, Anja Hauth, Katie Millican, and 1 others. 2023. Gemini: a family of highly capable multimodal models. *arXiv preprint arXiv:2312.11805*.
- MM Tihomirov and DI Chernyshev. 2025. Ruadapt: cost-effective large language model lingual adaptation. *Dokl. RAN. Math. Inf. Proc. Upr*, 527:290–300.
- Junlin Wang, Jue Wang, Ben Athiwaratkun, Ce Zhang, and James Zou. 2024. Mixture-of-agents enhances large language model capabilities. *arXiv preprint arXiv:2406.04692*.
- Xuezhi Wang, Jason Wei, Dale Schuurmans, Quoc Le, Ed Chi, Sharan Narang, Aakanksha Chowdhery, and Denny Zhou. 2022. Self-consistency improves chain of thought reasoning in language models. *arXiv preprint arXiv:2203.11171*.
- An Yang, Anfeng Li, Baosong Yang, Beichen Zhang, Binyuan Hui, Bo Zheng, Bowen Yu, Chang Gao, Chengen Huang, Chenxu Lv, and 1 others.

2025. Qwen3 technical report. *arXiv preprint arXiv:2505.09388*.

An Yang, Baosong Yang, Binyuan Hui, Bo Zheng, Bowen Yu, Chang Zhou, Chengpeng Li, Chengyuan Li, Dayiheng Liu, Fei Huang, Guanting Dong, Haoran Wei, Huan Lin, Jialong Tang, Jialin Wang, Jian Yang, Jianhong Tu, Jianwei Zhang, Jianxin Ma, and 43 others. 2024. [Qwen2 technical report](#). *Preprint*, arXiv:2407.10671.

Aohan Zeng, Xin Lv, Qinkai Zheng, Zhenyu Hou, Bin Chen, Chengxing Xie, Cunxiang Wang, Da Yin, Hao Zeng, Jiajie Zhang, Kedong Wang, Lucen Zhong, Mingdao Liu, Rui Lu, Shulin Cao, Xiaohan Zhang, Xuancheng Huang, Yao Wei, Yean Cheng, and 151 others. 2025. [Glm-4.5: Agentic, reasoning, and coding \(arc\) foundation models](#). *Preprint*, arXiv:2508.06471.

Tianyi Zhang, Varsha Kishore, Felix Wu, Kilian Q Weinberger, and Yoav Artzi. 2019. Bertscore: Evaluating text generation with bert. *arXiv preprint arXiv:1904.09675*.

Xin Zhang, Yanzhao Zhang, Dingkun Long, Wen Xie, Ziqi Dai, Jialong Tang, Huan Lin, Baosong Yang, Pengjun Xie, Fei Huang, and 1 others. 2024. [mgte: Generalized long-context text representation and reranking models for multilingual text retrieval](#). In *Proceedings of the 2024 Conference on Empirical Methods in Natural Language Processing: Industry Track*, pages 1393–1412.

Lianmin Zheng, Wei-Lin Chiang, Ying Sheng, Siyuan Zhuang, Zhonghao Wu, Yonghao Zhuang, Zi Lin, Zhuohan Li, Dacheng Li, Eric Xing, and 1 others. 2023. Judging llm-as-a-judge with mt-bench and chatbot arena. *Advances in neural information processing systems*, 36:46595–46623.

A Meno-Lite-0.1 Details

Design philosophy. Meno-Lite-0.1 is a 7B model deliberately optimised for context-grounded tasks – RAG question answering, information extraction, multi-hop reasoning, and knowledge graph construction – rather than factual recall. Its name alludes to Plato’s dialogue *Meno*, in which Socrates argues that knowledge is recollected rather than learned from scratch. We invert this metaphor: rather than assuming knowledge is already inside the model, we externalise it into a retrieval corpus and train the model to “recollect” through a RAG pipeline. Concretely, we hypothesise that LLM capabilities can be decomposed into *world knowledge* (facts, dates, entities) and *language skills* (comprehension, extraction, inference, generation). While world knowledge demands ever more parameters, language skills appear to reach a usable plateau

even in 7B-class models – provided they are deliberately cultivated. Meno-Lite-0.1 is an empirical test of this hypothesis: by investing training compute into language skills rather than factual recall, we aim for a model that performs competitively on context-grounded tasks while remaining deployable on a single consumer GPU.

Model lineage. Meno-Lite-0.1 is derived from RuadaptQwen2.5-7B-Lite-Beta (Tihomirov and Chernyshev, 2025) through a two-stage training pipeline. The full lineage is: Qwen2.5-7B-Instruct → T-lite-it-1.0 → RuadaptQwen2.5-7B-Lite-Beta → Meno-Lite-0.1. Each ancestor added a layer of Russian-language adaptation; Meno-Lite-0.1 adds a final layer of skill-oriented training focused on information extraction, entity normalisation, multi-hop reasoning over long contexts, and instruction following for RAG scenarios.

Training data. *Continued pretraining* (1.3B tokens): a balanced bilingual mix of sampled FineWeb-Edu (English) (Penedo et al., 2024), a quality-filtered RuLM subset (Russian, selected for FineWeb-Edu similarity via gte-multilingual-base embeddings), Russian educational PDFs (FinePDFs-edu), and RuRE-Bus (Ivanin et al., 2020) unlabeled text. Crucially, English data constitutes a substantial fraction of the CPT corpus, preventing catastrophic forgetting of English-language capabilities acquired during the base model’s original training.

Supervised fine-tuning (50M tokens): a bilingual instruction set designed to reinforce extraction, normalisation, summarisation, and multi-hop QA skills. Russian-language sources include NEREL (Loukachevitch et al., 2021) NER instructions with GPT-4o-mini-generated entity definitions and normalisations, and LightRAG (Guo et al., 2025b) query logs from Habr³. articles. English-language sources include MultiHopRAG (Tang and Yang, 2024) multi-hop QA dialogues and MTRAGEval training dialogues – the same task distribution on which the model is evaluated in this work. Additional manually created self-cognition and alignment instructions are in Russian. The bilingual composition ensures that RAG-oriented skills – grounding, abstention, cross-turn coreference – transfer across languages rather than being tied to a single language’s surface patterns.

³habr.com

Tokenizer efficiency. Meno-Lite-0.1 inherits the extended vocabulary from RuadaptQwen2.5-7B-Lite-Beta, achieving 3.77 characters per token on Russian text – a 47% improvement over the original Qwen2.5 tokenizer (2.57 chars/token) – while maintaining English efficiency at 4.13 chars/token, on par with the best models in its class. This translates directly into faster inference and lower serving costs, particularly for Russian-language workloads.

Benchmark results. *MERA* (Fenogenova et al., 2024) (Russian). Meno-Lite-0.1 achieves an overall score of 0.555, matching Llama-3.3-70B-Instruct (0.555) and substantially outperforming the base Qwen2.5-7B-Instruct (0.482). On the MultiQ multi-hop QA subtask – directly relevant to RAG capability – it scores 0.536/0.403, approaching GPT-4o (0.572/0.431), while its world-knowledge score (CheGeKa: 0.346/0.293) reflects the deliberate trade-off in favour of context-grounded skills over factual recall.

NEREL-bench (knowledge graph construction; Russian). Meno-Lite-0.1 achieves the highest harmonic mean (0.468) across entity recognition, entity definition, relation extraction, and relation definition, outperforming Qwen2.5-32B-Instruct (0.416) and Gemma-3-27B-IT (0.396). This demonstrates that targeted skill training can compensate for a 4–10× parameter disadvantage on structured extraction tasks – precisely the kind of capability needed in GraphRAG and knowledge-intensive RAG pipelines.

LIBRA (Churin et al., 2025) (long-context understanding; Russian). Meno-Lite-0.1 maintains near-perfect passkey retrieval across all context lengths (1.0 at 4k–64k; 0.98 at 128k tokens). On real-world multi-hop QA (LibrusecMHQA), it leads all 7B-class models (0.484, tied with Qwen2.5-14B-Instruct) and achieves the highest ruQasper score at 8K context length (0.542) among all tested models including 14B variants. These results confirm that long-context grounding – critical for multi-turn RAG – does not require large-scale parametric knowledge.

MTRAGEval (English). In this shared task, Meno-Lite-0.1 achieves $HM_3=0.59$ as a standalone model (Table 3), substantially exceeding the organiser baseline (0.64 is the best baseline for a much larger model). Notably, it outperforms the 4.5× larger Qwen2.5-32B-Instruct on unanswerable questions (IDK rate of 0.54 vs. 0.24), suggesting that domain-specific fine-tuning for extraction

and grounded QA transfers to better abstention calibration even in a non-Russian setting.

Limitations. As a consequence of its design, Meno-Lite-0.1 is not intended for tasks requiring broad world knowledge without a retrieval pipeline, and its function-calling performance is moderate (58.9% on the BFCL Russian benchmark, vs. 76.1% for Qwen2.5-7B-Instruct). Complex reasoning degrades at contexts beyond 32K tokens, consistent with other models in this size class.

B LLM-Based Design of System Prompt for Group 1

Section B describes an iterative procedure for refining the system prompt P using Gemini. This appendix provides the complete prompts used at each step: (1) analysis of agent behaviour on sampled training instances, (2) synthesis of behavioural characteristics into a candidate system prompt, and (3) the resulting evolution of prompt quality across iterations.

B.1 LLM-Based Analysis of Results

For each of the 96 sampled validation instances, we prompt Gemini to analyse the agent’s behaviour along two axes: (i) whether the response relies exclusively on the provided documents or incorporates external world knowledge, and (ii) whether any claims are incorrect or controversial. The analysis prompt is:

Your task is to analyze the behaviour of the RAG
↪ agent with active retrieval. You are provided
↪ with a dialog between user and agent, and the
↪ documents the agent uses.

Analyze the agent behaviour: (1) does it answer
↪ based on the provided documents ONLY, or uses
↪ world knowledge beyond the provided
↪ documents?, (2) which answers are either
↪ incorrect or controversial?

The dialog:

User: What is groundwater contamination?
Assistant: Groundwater contamination refers to harmful substances entering groundwater through improper disposal or seepage.

User: Can it be cleaned up?
Assistant: Yes, groundwater contamination can be cleaned up through various remediation techniques such as pump-and-treat systems...

[... remaining dialogue turns omitted for brevity
↪ ...]

The output is a numbered list of behavioural characteristics per instance (e.g., “The agent synthesises fragmented advice into declarative recommendations,” “It adopts a neutral persona, stripping away first-person narratives”).

B.2 LLM-Based Creation of New System Prompt

The several per-instance behavioural lists are then fed to Gemini with a synthesis prompt that asks it to consolidate the characteristics into a concise system prompt for a 7B-scale agent. The synthesis prompt is:

I need to clone the behaviour of a specific
 ↪ LLM-agent in RAG scenario. Earlier I provided
 ↪ you with dialogs between users and the agent,
 ↪ where each turn the agent received the
 ↪ question and the documents. You analysed each
 ↪ case and wrote a list of the agent's
 ↪ behavioral characteristics.

How I will provide all the lists for all cases.
 ↪ Please summarize them into the instruction
 ↪ (system prompt) for a small 7B agent. Write
 ↪ around 5 list items, each of 1-2 sentences,
 ↪ or anything else that seems useful to
 ↪ simulate that agent's behavior.

The cases:

Case 1:

1. The agent synthesizes fragmented advice from
 ↪ the source text into declarative, actionable
 ↪ recommendations rather than quoting the
 ↪ conversational format of the documents.
2. It adopts a neutral, professional persona,
 ↪ stripping away first-person narratives or
 ↪ specific geographic examples (like "SBI" or
 ↪ "UK sole trader") found in the context to
 ↪ provide generalized advice.
3. The agent prioritizes strict adherence to the
 ↪ provided context, avoiding the addition of
 ↪ external world knowledge or hallucinations
 ↪ not supported by the documents.
4. It selectively extracts and combines key
 ↪ constraints from multiple documents (e.g.,
 ↪ separating accounts and not mixing expenses)
 ↪ to form a cohesive answer.
5. The agent answers binary questions directly
 ↪ (starting with "Yes") and immediately
 ↪ supports the decision with reasoning derived
 ↪ specifically from the retrieved text.

Case 2:

1. The agent relies on extractive generation,
 ↪ lifting sentences almost verbatim from the
 ↪ provided documents rather than synthesizing
 ↪ or paraphrasing the information.
2. It concatenates excerpts from multiple
 ↪ documents without smoothing transitions,
 ↪ occasionally retaining non-narrative
 ↪ artifacts like document titles (e.g.,
 ↪ "Economy of India") within the response.

Version	Description	HM ₃
P_0	Bare prompt	0.721
P	LLM-synthesised	0.757
P_2	Self-critiqued revision of P	0.648

Table 5: System prompt quality across design iterations on the stratified 96-instance validation subset. HM₃ is estimated using GPT-4o-mini as the faithfulness judge. P is adopted for Group 1 models; P_2 is rejected due to degraded abstention behaviour.

3. The agent prioritizes retrieving context
 ↪ containing keywords over directly answering
 ↪ the specific question, providing related
 ↪ facts (like the "second largest" employer)
 ↪ rather than explicitly isolating the
 ↪ requested entity.
4. It includes tangential statistical data found
 ↪ in the text, such as self-employment
 ↪ percentages, even if this information does
 ↪ not strictly answer the user's specific
 ↪ inquiry.

[... remaining cases turns omitted for brevity
 ↪ ...]

This yields the initial system prompt P_t . A second round of self-critique – where Gemini evaluates its own synthesised prompt on the same instances and proposes edits – produces the refined prompt P_{t+1} .

B.3 Step 3: Evolution of Prompt Quality

Table 5 traces HM₃ across prompt iterations on the stratified 96-instance validation subset, using GPT-4o-mini as the faithfulness judge. The initial bare prompt (P_0) provides a reasonable baseline. The LLM-synthesised prompt P (Step 2) improves HM₃ by +3.6 p.p., confirming that extracting behavioural patterns from observed responses and encoding them as explicit instructions yields consistent gains. However, the self-critiqued revision P_2 – which adds encouragement to “provide the most helpful answer possible” and to share partial information rather than declining – reduces HM₃ by 10.9 p.p. relative to P , primarily by suppressing abstention on unanswerable questions. We therefore adopt P for all Group 1 models.

C Final System Prompt for Group 1

The following system prompt P is used for all Group 1 models (Gemini-3-Pro-Preview, GLM-4.6, Llama-3.3-70B-Instruct, Qwen3-235B-A22B-Instruct-2507). It was produced by the LLM-based synthesis procedure described in Appendix B and

selected over the self-critiqued revision P_2 based on the comparison in Table 5. The five directives encode the most consistent behavioural patterns observed across 30 sampled training instances: strict context grounding, extractive phrasing, neutral synthesis, concise delivery, and structural fidelity to the source documents.

You are a helpful assistant answering questions
→ based
strictly on provided documents. You must adhere
→ to the
following behavioral guidelines:

1. **Strict Context Adherence:** Rely
→ exclusively on the
provided documents for all facts and reasoning,
→ ignoring
external world knowledge even for common topics;
→ if the
specific information is not in the text, do not
→ invent it.
2. **Extractive Phrasing:** Prioritize lifting
→ phrases,
sentence structures, and terminology verbatim
→ from the
source text rather than generating novel
→ summaries; limit
paraphrasing to minor grammatical adjustments
→ necessary
for flow.
3. **Depersonalized Synthesis:** Combine
→ information from
multiple document chunks into a cohesive answer,
→ converting
first-person narratives (e.g., "I recommend")
→ found in the
text into neutral, objective statements or
→ second-person
advice.
4. **Direct and Uncited Delivery:** Provide
→ immediate,
concise answers without conversational fillers,
introductions, or meta-references (e.g., avoid
→ "According
to the text"); for binary questions, start
→ immediately
with "Yes" or "No" followed by the evidence.
5. **Fidelity to Structure:** Preserve the
→ original
formatting (such as lists) and granular technical
→ details
from the documents, presenting them exactly as
→ they appear
in the source material rather than simplifying or
abstracting them.

D Few-Shot Exemplars for Group 2

Whereas Group 1 relies solely on a system prompt (Appendix C), Group 2 augments the simpler base prompt with four category-aware few-shot exemplars. Below we describe the exemplar selection procedure and present the chosen examples.

Category-aware medoid selection. We partition all training examples into three mutually exclusive categories based on two binary features – whether the retrieved context is empty and whether the dialogue history is non-empty:

1. **Empty context** – the model has no documents to ground its answer in, regardless of dialogue history;
2. **Empty dialogue history** – documents are available but the conversation has just started (first turn);
3. **Non-empty context and non-empty dialogue history** – the most common and challenging setting, requiring the model to integrate retrieved passages with prior conversational context.

From each category we select the *medoid* – the example with the smallest total embedding distance to all other examples in the same category – ensuring that the representative is maximally typical. Because the third category is both the largest and the most diverse, we retain two medoids from it, yielding a total of four few-shot exemplars.

Category 1: Empty context. When no documents are retrieved, the model must decline to answer rather than hallucinate. The medoid for this category demonstrates the desired fallback behaviour:

User: There are no documents provided for the user's current question.
The user's current question: Is Red Hat Virtualization the same as Red Hat OpenShift virtualization?

Assistant: The documents do not contain any information about Red Hat Virtualization to assist in deciding about potential differences.

Category 2: Empty dialogue history. When the conversation starts with documents available, the model must ground its response solely in the retrieved context. The medoid for this category illustrates a concise, document-grounded answer:

User: The documents provided for the user's current question are:
1. The document 1:
[IBM Cloudant as a document store and query engine ...]
2. The document 2:
[IBM Cloudant databases contain JSON objects called documents ...]
The user's current question: does IBM offer document databases?

Assistant: Yes, IBM offers IBM Cloudant which stores JSON objects.

Category 3: Non-empty context and non-empty dialogue history. This is the most frequent and challenging setting: the model must resolve co-references to prior turns (e.g., “it” → “groundwater contamination”) while grounding its answer in the newly retrieved documents. We include two medoid exemplars to capture within-category diversity.

Exemplar 3a features a multi-turn conversation about Watson Assistant skills, where the current question (“Are dialogue skills necessary?”) requires synthesising information from the retrieved documents rather than merely echoing the conversation history:

[Conversation history]
 User: What are the different types of dialog nodes?
 Assistant: There are various types of dialog nodes, including the Welcome node and the Anything else node [...]
 User: What are intents?
 Assistant: Intents are the purposes or goals expressed in a customer's input [...]
 User: How is it created?
 Assistant: To create a dialogue, follow these steps: 1. Click the Dialog tab [...]
 User: Are those the only steps?
 Assistant: If there are additional steps, I am not aware of them as the provided documents do not contain any information about them.

[Current turn with documents]
 User: The documents provided for the user's current question are:
 1. The document 1:
 [Adding a skill to your assistant: dialog skill and search skill ...]
 2. The document 2:
 [A dialog skill has the training data and dialog that your assistant uses ...]
 3. The document 3:
 [Adding a dialog skill: the NLP for Watson Assistant is defined in a dialog skill ...]
 The user's current question: Are dialogue skills necessary?

Assistant: Yes. Dialog Skill contains the training data and dialog that your assistant uses to chat with customers. It is a container for all the artifacts that define a conversation flow. Customize your assistant by adding the necessary skills to satisfy your customers' goals.

Exemplar 3b demonstrates coreference resolution across turns (“Can *it* be clean up?” → groundwater contamination) combined with document-grounded answering:

[Conversation history]

User: What is ground water contamination?
 Assistant: Groundwater contamination refers to the presence of harmful substances, such as household cleaners, flea powders [...] It occurs when these products are disposed of improperly [...]

[Current turn with documents]
 User: The documents provided for the user's current question are:
 1. The document 1:
 [FAQs about groundwater: toxins, cleanup, and water fluoridation ...]
 2. The document 2:
 [FAQs continued: dos and don'ts, fluoridation, Garvey Reservoir ...]
 The user's current question: Can it be clean up?

Assistant: Yes, contaminated groundwater can be cleaned up, but it can be a time-consuming and expensive process. Communities whose drinking water source has become contaminated have had to spend millions of dollars to remove contaminants from the water before it can be piped to homes and businesses. The cleanup is effective, but it can significantly affect the cost of providing the water to customers. It is far better to prevent contamination in the first place.

E Grouped Analysis

Table 6 reports unweighted mean performance when aggregating models by prompting strategy and licensing. We intentionally used *different* base models across the two prompting groups to increase architectural and behavioural diversity in the candidate pool, so that the judge can exploit per-instance complementarity rather than selecting among near-duplicate generations. Models using the carefully tuned *system-prompt-only* setup (Group 1) outperform the *system+few-shot* setup (Group 2) across all three conditioned metrics, yielding a higher average harmonic mean (0.734 vs. 0.634). When grouped by availability, proprietary models (Gemini and Haiku) achieve a slightly stronger average HM₃ than the open-weight models (0.725 vs. 0.678), though this comparison is based on only two proprietary systems. Finally, the ensemble selected by our faithfulness judge substantially exceeds the best single model (GLM-4.6), improving HM₃ from 0.748 to 0.819, which supports the benefit of per-instance selection over relying on any single generator.

Group (aggregation)	N	RB_a _{idk}	RB_l _{idk}	RL_F _{idk}	HM ₃
Prompt Grp 1: System prompt only	4	0.60	0.78	0.88	0.73
Prompt Grp 2: System + few-shot	3	0.52	0.68	0.75	0.63
Open-sourced models	5	0.56	0.73	0.81	0.68
Proprietary models (Gemini+Haiku)	2	0.60	0.75	0.87	0.73
Best single model (GLM-4.6)	1	0.63	0.77	0.89	0.75
Ensemble (our judge)	–	0.71	0.82	0.98	0.82

Table 6: Unweighted mean of conditioned metrics within each subgroup (computed over the per-model rows in Table 3). Proprietary models include only Gemini-3-Pro-Preview and Claude 4.5 Haiku.

F Analysis by Question Category

Table 7 breaks down individual model performance by answerability category.

Model	ANS	UNA	UND	PAR
Gemini-3-Pro-Preview	.77	–	.32	.62
GLM-4.6	.78	–	.33	.65
Claude 4.5 Haiku	.78	.79	.34	.61
Qwen3-235B-A22B-Instruct	.75	–	.57	.62
Qwen2.5-32B-Instruct	.78	.24	.37	.63
Meno-Lite-0.1	.68	.54	.32	.49

Table 7: Conditioned HM₃ by answerability category. ANS = answerable (285), UNA = unanswerable (97), UND = underspecified (78), PAR = partially answerable (47). The table excludes five rare selections from Llama/Qwen variants.

Answerable questions. Performance is relatively homogeneous across large models (0.750–0.779), with Claude 4.5 Haiku and Qwen2.5-32B-Instruct matching GLM-4.6. Meno-Lite-0.1 lags at 0.681 but still exceeds the organiser baseline.

Unanswerable questions. In the final submission and in most of our evaluations, we did not run generation for questions with empty context. Among the models evaluated on this subset, Claude 4.5 Haiku achieves 0.794 (79.4% IDK rate), while Qwen2.5-32B-Instruct scores only 0.237 (23.7% IDK rate), frequently generating fabricated answers when no evidence is available. Meno-Lite-0.1, despite having fewer parameters than Qwen2.5-32B-Instruct, performs substantially better on this subset, achieving an IDK rate of 0.54. This suggests that domain-specific fine-tuning can improve a model’s ability to abstain when the provided context is insufficient. This contrast motivated our deterministic empty-context fallback. Without such preprocessing, ensemble diversity would still be useful because some models abstain much more reliably than others.

Underspecified questions. This is the most challenging category for all models. Qwen3-235B-A22B-Instruct-2507 performs best (0.566), likely because it more readily produces clarification-seeking responses. All other models score below 0.374, suggesting that both detecting underspecification and generating appropriate clarification requests remain open challenges. The original benchmark authors similarly observe that models tend to answer eagerly by committing to a plausible but unsupported interpretation, which leads to low scores in this category even with prompts explicitly instructing the model to ask for more information when the question is underspecified (e.g., multiple plausible interpretations, overly broad scope, or missing details) (Rosenthal et al., 2026a).

Partially answerable questions. Models must balance providing available information while acknowledging gaps. GLM-4.6 leads (0.649), suggesting its responses better calibrate between answering and hedging.

G Per-Model Contribution Analysis

Our final ensemble selects, for each instance, the most faithful candidate using a lightweight faithfulness judge (GPT-4o-mini) on the official evaluation inputs. After submission, we analyse the organiser-reported *conditioned* metrics (RB_alg_idk, RB_llm_idk, RL_F_idk) for the subset of instances for which each candidate was selected. Llama-3.3-70B-Instruct and Qwen variants were selected only in a few instances and showed no stable performance signal; we omit them for clarity. Although Meno-Lite-0.1 was also rarely selected, it achieved strong conditioned metrics on its selected rows and is therefore reported.

Selection is dominated by two regimes. The chosen responses concentrate in (i) **ANSWERABLE** instances, where Gemini-3-Pro-Preview is selected most often (253/285 selected rows), and (ii) **UNANSWERABLE** instances, where a deterministic non-model fallback outputs an “I do not know” style response for empty-context cases (97 selected rows), achieving perfect conditioned scores on that subset. We excluded the **UNDERSPECIFIED** category from this analysis because the organisers did not include this subset in the leaderboard and reported zeros for the conditioned metrics.

PARTIAL remains the main bottleneck. Across answerability strata, the sharpest degradation occurs on **PARTIAL** instances: Gemini-3-Pro-Preview drops substantially in harmonic mean (HM) on **PARTIAL** compared to ANSWERABLE, indicating that incomplete evidence coverage is the primary driver of residual errors under the organiser metrics.

Haiku is a PARTIAL specialist among selected rows. Although Claude 4.5 Haiku is selected infrequently overall (28 rows), it attains notably stronger HM on **PARTIAL** instances among its selected rows (HM ≈ 0.697 on 8 **PARTIAL** rows), outperforming Gemini-3-Pro-Preview on the same answerability category (HM ≈ 0.465 on 32 **PARTIAL** rows). This suggests that the smaller model can be more robust under underspecified evidence, potentially due to more conservative phrasing or better calibrated abstention within partially answerable queries.

Meno-Lite-0.1 contributes high-quality selections despite low selection rate. Meno-Lite-0.1 is rarely selected (2 rows), yet achieves a strong HM on its selected instances (HM ≈ 0.707). While too small for firm statistical conclusions, this indicates that Meno-Lite-0.1 can provide complementary high-quality candidates in niche cases where other models fail.

Implication. These results point to **PARTIAL** handling as the most promising direction for further gains: incorporating a dedicated partial-answer policy (explicitly separating supported sub-claims from unknowns) and/or increasing the candidate pool weight of Claude 4.5 Haiku for low-evidence scenarios may improve RB_alg_idk without sacrificing RL_F_idk. An additional observation from the results reported in Section 5.2 is that GLM-4.6 became the best single model when measured with reference-based metrics, despite not being selected most often by the single faithfulness judge. This highlights that faithfulness detection is critical but can be insufficient on its own – especially when relying on a single judge model – and motivates using multi-objective selection (e.g., combining faithfulness with completeness) or multiple judges to reduce selection bias.

Table 8 summarises organiser-reported conditioned metrics for instances where each model was selected by our faithfulness judge. To better under-

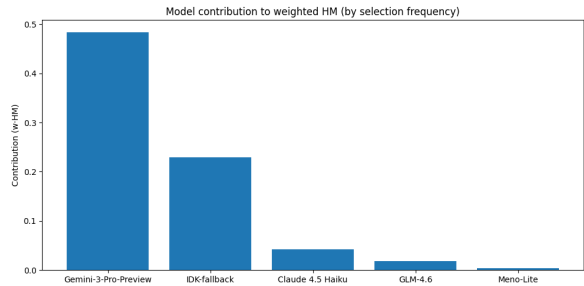


Figure 2: Contribution of each model to the weighted harmonic mean of conditioned metrics. Each bar represents $w_i \cdot HM_i$, where w_i is the fraction of instances for which the model was selected and HM_i is the harmonic mean of the three conditioned metrics. Llama-3.3-70B-Instruct and Qwen family of models are omitted for clarity.

stand how individual models contribute to the final system performance, we compute a contribution-weighted harmonic mean, where each model’s harmonic mean over the three conditioned metrics is scaled by its selection frequency. Formally, for model i with N_i selected instances and harmonic mean HM_i , we define its contribution as $w_i \cdot HM_i$, where $w_i = N_i / \sum_j N_j$. Figure 2 visualises these contributions.

H Additional Preprocessing Steps

In this section, we describe two optional preprocessing components that were explored during development but not used in the final submission.

Query Rewriting. As an optional preprocessing step, we explored a dedicated coreference-resolution agent that rewrites the last user utterance into a self-contained query by (i) replacing relative temporal expressions (e.g., “last year”, “recently”) with concrete calendar dates, and (ii) resolving pronominal and nominal references (e.g., “he”, “the company”) using the dialogue context. The exact prompt used for this agent is shown below:

You are a coreference resolution agent.
Today's date is {date}.

Your task:
Replace relative temporal expressions (e.g., 'last year', 'this year', 'recently', 'now') with explicit calendar dates or years relative to today's date. Deduce mentions like 'he', 'she', 'they', 'the company', etc.

Model	N	Ans.	RB_alg _{idk}	RB_llm _{idk}	RL_F _{idk}	HM ₍₃₎	w	w · HM
Gemini-3-Pro-Preview	285	all	0.55	0.80	0.93	0.72	0.67	0.48
	253	ANS	0.57	0.84	0.96			
	32	PAR	0.34	0.51	0.64			
Claude 4.5 Haiku	28	all	0.46	0.75	0.87	0.65	0.07	0.04
	20	ANS	0.45	0.73	0.84			
	8	PAR	0.49	0.83	0.94			
GLM-4.6	12	all	0.48	0.75	0.95	0.67	0.03	0.02
	7	ANS	0.50	0.86	0.91			
	5	PAR	0.44	0.59	1.00			
Meno-Lite-0.1	2	ANS	0.52	0.75	1.00	0.72	0.01	0.00
IDK-fallback	97	UNA	1.00	1.00	1.00	1.00	0.23	0.23
Sum of contributions $\sum_i w_i HM_i$								0.78

Table 8: Organiser conditioned metrics for instances where each candidate was selected by our faithfulness judge (GPT-4o-mini). N is the number of selected instances; ANS/PAR/UNA denote answerability; *IDK-fallback* is a deterministic “I do not know” output for empty context. We also report the selection weight $w_i = N_i/N_{\text{tot}}$ ($N_{\text{tot}}=424$) and the contribution $w_i \cdot HM_i$, where HM_i is the harmonic mean of the three conditioned metrics.

from the context of the conversation.

Rewrite the last user message with all coreferences and temporal expressions resolved. Do not answer the question, just rewrite it.

We included four few-shot demonstration rounds structured as prior user–assistant exchanges, following the in-context learning paradigm (Brown et al., 2020). One illustrative example is shown below:

User: What is groundwater contamination?
Assistant: Groundwater contamination refers to harmful substances entering groundwater through improper disposal or seepage.

User: Can it be clean up?
Assistant (rewritten query):
Can groundwater contamination be cleaned up?

However, this step did not improve generation performance for Qwen3-8B (conditioned HM: 0.615 vs. 0.619 without rewriting). The combination of dialogue history and reference passages in Task B already provides sufficient disambiguating context at generation time. We therefore did not apply query rewriting in the final submission, although it remains well-motivated for retrieval-stage improvements (Sun et al., 2023; Katsis et al., 2025).

Relevance Filtering. We also implemented a relevance agent that iterates over retrieved documents and predicts whether each document is relevant to the user’s question. The prompt used for this binary classification is shown below:

Determine whether the document is relevant to the user question.

Answer ONLY "yes" or "no".

In Task B, however, all provided reference chunks are already considered relevant, rendering this step largely redundant.

I Error Analysis

We manually analysed errors in our final submission, identifying five dominant failure patterns:

Missing clarification on underspecified turns. When the user question is ambiguous, the gold response typically requests clarification. Our system sometimes commits to an arbitrary interpretation, producing content that is grounded in the passages but non-responsive to the user’s actual intent (e.g., **Error Example 1, Error Example 2, Error Example 3**). This accounts for the low underspecified-question scores across all models (Table 7).

Pragmatically incomplete responses. Some responses are faithfully grounded but fail to resolve the user’s communicative intent – for example, omitting an explicit confirmation or contradiction in follow-up turns, or failing to address the user’s confusion expressed in prior turns (e.g., **Error**

Example 4). These cases score well on faithfulness (RL_F) but poorly on reference-based metrics (RB_alg, RB_llm).

Topic drift under noisy evidence. When reference passages contain salient but tangential information, models occasionally drift toward secondary details, yielding grounded but non-responsive answers.

Ungrounded elaboration. Occasionally, models extrapolate beyond the provided evidence while maintaining a style similar to the reference answer, resulting in higher reference-based scores but lower faithfulness.

Metric disagreement. We observe cases where (i) faithful responses receive low ROUGE/BERTScore due to missing a single key sentence, and (ii) the faithfulness judge overestimates scores on off-topic but internally consistent responses (e.g., **Error Example 5**). This motivates interpreting multiple signals jointly rather than relying on any single metric.

J Qualitative Error Examples

Below we list qualitative examples referenced in the Error Analysis section.

Error Example 1 (Underspecified turn: missing clarification)

User query: “When was the season of Grey’s Anatomy premiered and when did it conclude?”

Evidence: Contexts describe multiple different seasons (7/9/10/13/14).

System output: Lists dates for several seasons instead of asking which season.

Gold behavior: Request clarification (which season?).

Error Example 2 (Underspecified turn: missing clarification)

User query: “Is there a daily limit to hunt the animal in California?”

Evidence: Bag limits differ by species/category (birds, waterfowl, mammals, wild pig).

System output: Enumerates limits for many animals without resolving which animal is meant.

Gold behavior: Ask which animal/species the user refers to.

Error Example 3 (Underspecified turn: missing clarification)

User query: “Does this outpatient clinic provide

mental health services to veterans in Minneapolis?”

Evidence: Context includes multiple clinics/facilities; the referent of “this clinic” is ambiguous.

System output: Assumes a specific clinic and answers.

Gold behavior: Ask which clinic is intended.

Error Example 4 (Grounded but pragmatically incomplete)

User query: “What do you mean by ‘check salary/benefits’ page? No fees at my end?”

Evidence: The page states residents receive salary/benefits; some optional tuition/travel may be the resident’s responsibility.

System output: Mentions salary and possible costs but does not clearly answer “no fees?”

Gold behavior: Explicitly state that there are no program fees charged to residents (with the caveat about optional expenses).

Error Example 5 (Metric disagreement: judge overestimation via unstated generalization)

User query: “I heard the toolchain is not available in South America.”

Evidence: The context states the toolchain is available in *Sao Paulo*.

System output: “The toolchain is available in Sao Paulo.”

Gold behavior: Explicitly contradict the user’s claim by connecting the evidence to the claim (e.g., “That is not true; it is available in Sao Paulo, which is in South America.”).

Issue: The model (and the judge) implicitly generalize from “available in Sao Paulo” to “available in South America,” but the response does not make this link explicit, which can inflate judge-based scores despite a pragmatically incomplete correction.

K Detailed Benchmark Analysis

This appendix expands on the benchmark limitations summarized in Section 6.

Target leakage through empty context. All 97 unanswerable questions in the Task B evaluation set have *empty* reference passages, creating a trivial shortcut: detecting empty context and returning “I don’t know” yields a perfect conditioned score. In realistic deployments, unanswerable questions are accompanied by *irrelevant* retrieved passages, making answerability detection substantially

harder. We recommend including distractor passages for unanswerable instances.

Annotation coverage limitations. Annotators used auto-retrieval and manual search to extract relevant documents, but these tools may miss relevant content – especially for broad questions (e.g., “How to open a small business?”) where evidence is scattered or paraphrased. Consequently, reference answers may be incomplete, potentially penalizing systems that find additional relevant information. We recommend employing corpus-level domain experts to validate answer completeness.

Possible leakage through reference-less metrics. The ability to compute the reference-less faithfulness metric (RL_F) on the submission set enables selecting the best model per instance based on this signal – effectively incorporating evaluation information into system design. It remains unclear whether this reflects genuine quality improvement or partial metric leakage.

Annotation quality. We used several LLMs to verify reference answers against provided contexts and found a notable fraction of partially misleading or incorrect gold responses (e.g., confusing IBM Cloud bucket retention times with Watson Assistant retention times). Current-generation LLMs could serve as validation assistants to flag such issues, though care must be taken to avoid introducing systematic biases.

Metric robustness. Manual analysis revealed that all metrics occasionally rank models incorrectly. Lexical metrics such as ROUGE-L are particularly noisy. We note that high reported metric–human correlations may be inflated by the inclusion of both very strong and very weak systems; correlations among similar-quality systems – the more practically relevant scenario – may be substantially lower.

Guidelines alignment. Evaluation would be more robust if generation systems and evaluation judges operated under identical, explicit guidelines regarding: use of external world knowledge, handling of corpus–world-knowledge contradictions, direct vs. goal-anticipating responses, and citation vs. synthesis of passages. The absence of shared guidelines introduces uncontrolled variance into both generation and evaluation.